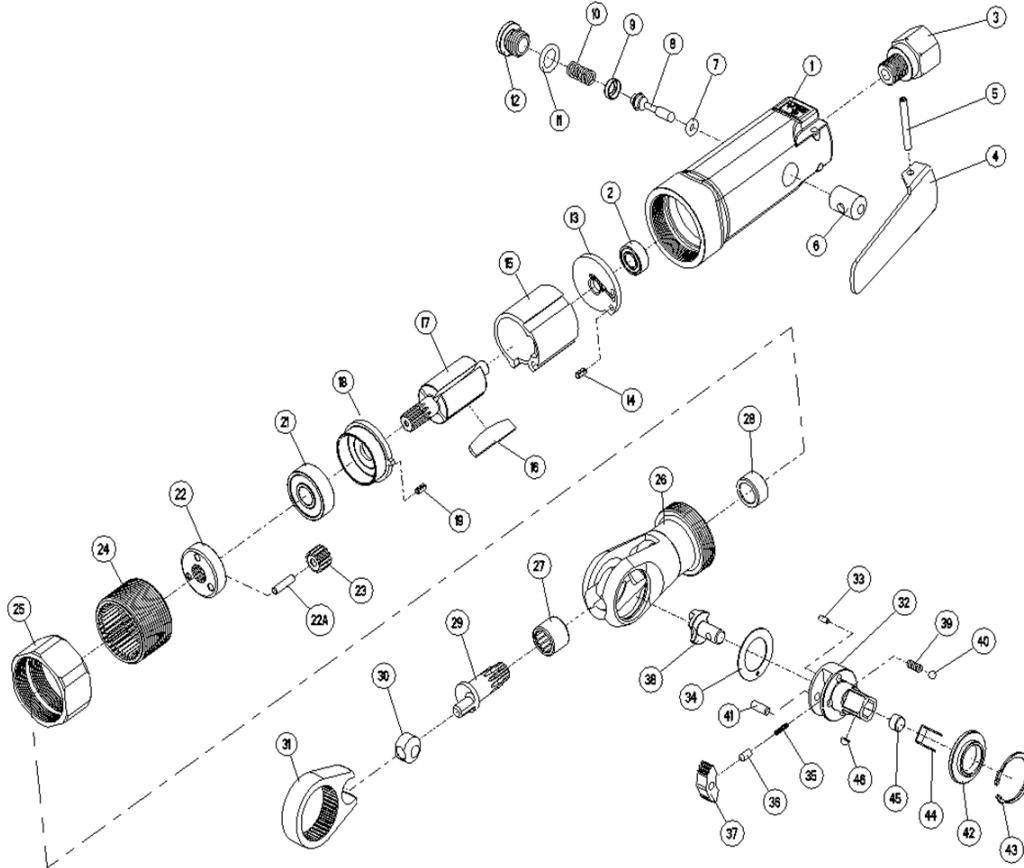


GP-0737A / GP-0737B

3/8" MINI 2-IN-1 RATCHET WRENCH /SCREWDRIVER



PARTS DESCRIPTION

NO.

- 01. MOTOR HOUSING ASSEMBLY
- 02. REAR ROTOR BEARING
- 03. INLET BUSHING
- 04. THROTTLE LEVER
- 05. THROTTLE LEVER PIN
- 06. THROTTLE BUSHING
- 07. THROTTLE VALVE O-RING
- 08. THROTTLE VALVE ASSEMBLY
- 09. VALVE SPRING SEAT
- 10. THROTTLE SPRING
- 11. HOUSING PLUG SEAL
- 12. HOUSING PLUG
- 13. REAR END PLATE ASSEMBLY
- 14. END PLATE DOWEL
- 15. CYLINDER
- 16. VANE PACKET (4)
- 17. ROTOR
- 18. FRONT END PLATE ASSEMBLY
- 19. END PLATE DOWEL
- 21. FRONT ROTOR BEARING
- 22. GEAR HEAD
- 22A. GEAR HEAD PIN (3)
- 23. PLANET GEAR (3)

PARTS DESCRIPTION

NO.

- 24. RING GEAR
- 25. COUPLING NUT
- 26. RATCHET HOUSING ASSEMBLY
- 27. CRANKSHAFT BEARING
- 28. CRANKSHAFT BUSHING
- 29. CRANKSHAFT
- 30. DRIVE BUSHING
- 31. RATCHET YOKE
- 32. RATCHET ANVIL ASSEMBLY
- 33. REVERSE BUTTON STOP PIN
- 34. WEAR WASHER
- 35. RATCHET SPRING
- 36. RATCHET LOCK PIN
- 37. RATCHET PAWL
- 38. REVERSE BUTTON
- 39. DETENT SPRING (2)
- 40. DETENT BALL (2)
- 41. PAWL RETAINING PIN
- 42. THRUST WASHER
- 43. ANVIL RETAINING RING
- 44. ANVIL ASSEMBLY PC. SPRING
- 45. ANVIL ASSEMBLY MAGNET